



# GAT MONTHLY MEMBERSHIP PROGRESS REPORT

Results as of: 4/30/2023

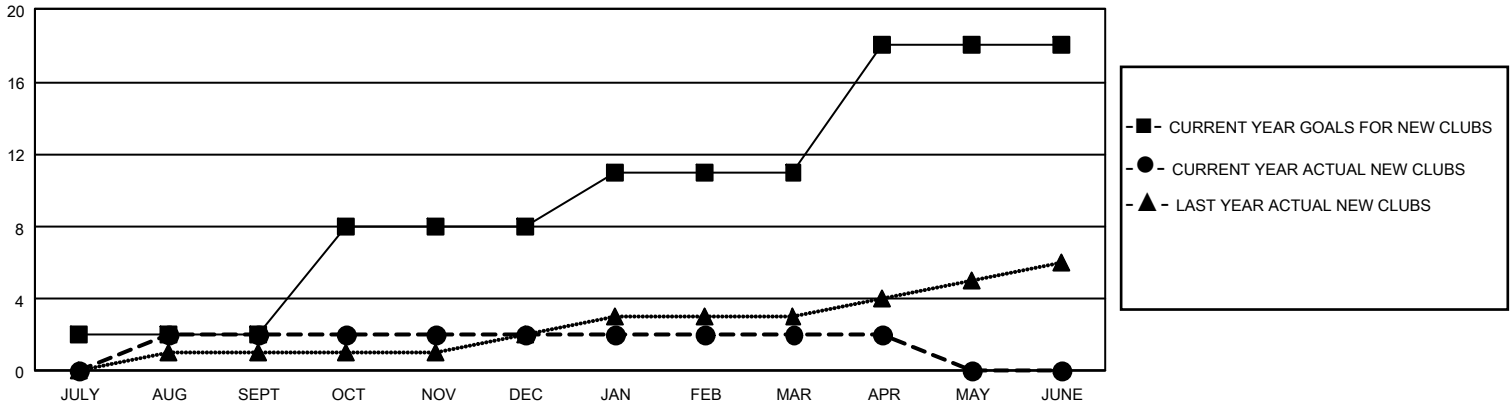
## GMT Constitutional Area 1, Group N

REPORT DOES NOT INCLUDE CLUBS IN UNDISTRICTED AREAS.

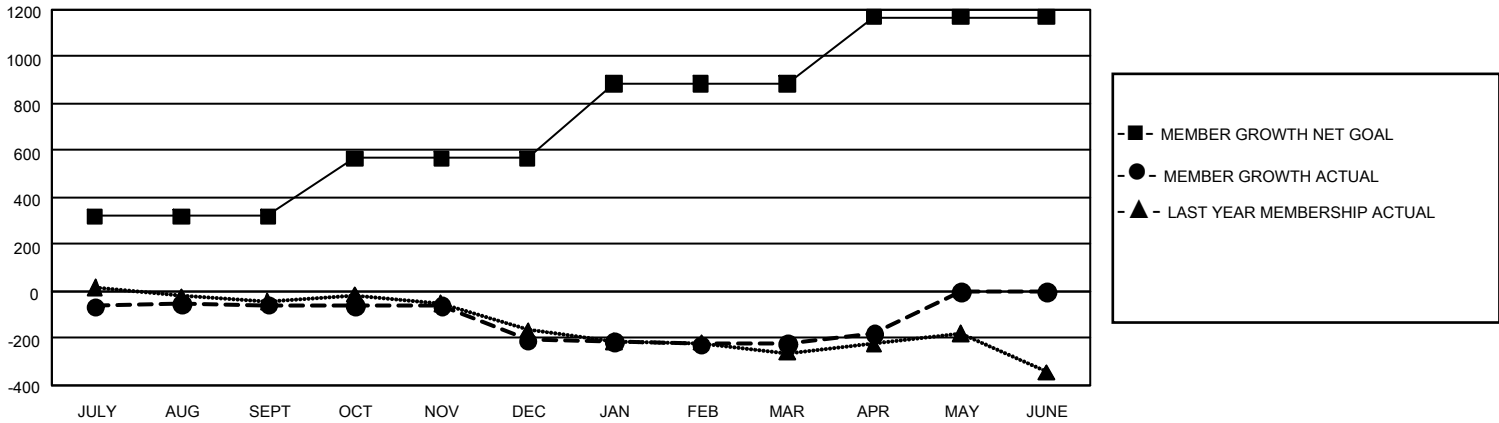
Clubs			
RESULTS FOR 2022-2023			
QUARTER	NEW CLUB GOAL	NEW CLUBS	DROPPED CLUBS
JULY/AUG/SEPT	6	2	4
OCT/NOV/DEC	18	0	6
JAN/FEB/MAR	9	0	4
APR/MAY/JUNE	21	0	1

Members			
RESULTS FOR 2022-2023			
QUARTER	MEMBER GROWTH NET GOAL	MEMBER GROWTH ACTUAL	DROPPED MEMBERS ACTUAL (including transfers)
JULY/AUG/SEPT	319	350	378
OCT/NOV/DEC	247	301	423
JAN/FEB/MAR	320	343	330
APR/MAY/JUNE	282	126	81

GOALS AND ACTUAL NEW CLUBS CUMULATIVE



GOALS AND ACTUAL MEMBERS CUMULATIVE



<b>DROPPED CLUBS: 15</b>	
<b>DROPPED MEMBERS</b>	
DECEASED	170
CLUB CANCELLED	41
OTHER	1,000
<b>TOTAL</b>	<b>1,211</b>

284 CLUBS OF 544 ADDED 1 OR MORE NEW MEMBERS

[CLICK HERE FOR CUMULATIVE MEMBERSHIP DATA](#)

<u>GENDER DISTRIBUTION</u>	
MALE	7,705 (63.71%)
FEMALE	4,379 (36.21%)
NON BINARY	2 (0.02%)
PREFER NOT TO ANSWER	7 (0.06%)
TOTAL FAMILY UNIT MEMBERS	2,312
FAMILY MEMBERS PAYING HALF DUES	1,185